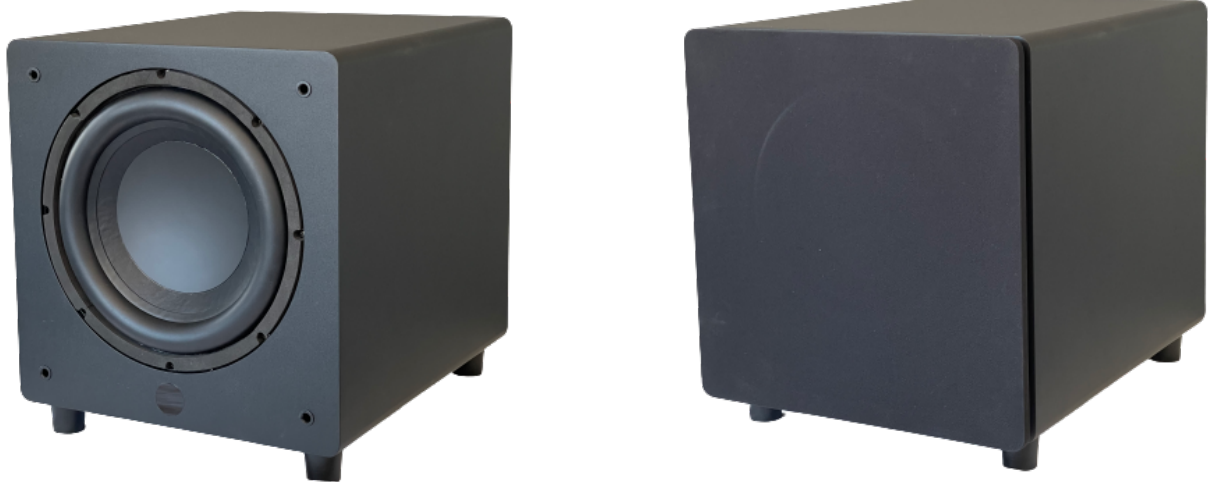


Velodyne Acoustics Impact X High Performance, High Value Subwoofer



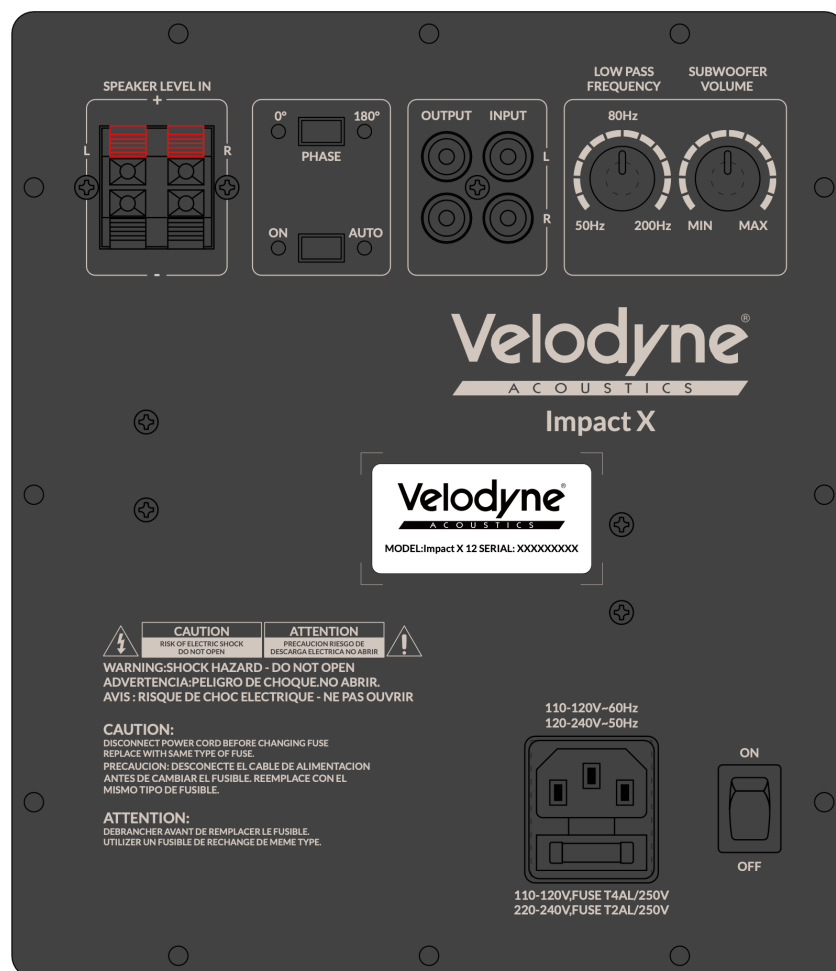
Velodyne Acoustics, builders of the world's number one rated subwoofers for more than 40 years, proudly introduces a new stylish, affordable, ultra-high output, low distortion ported subwoofer - the all-new Impact X Series. Impact X 10 and Impact X 12 boast attractive cabinets in black and white finish that easily fits any home for stereo or home cinema applications with deep, defined, accurate bass, this all at friendly prices. A highly efficient front firing driver in 10" or 12" with a noise cancelling down firing rounded port design produces amazing bass output that brings your favorite movies and music to life. This new Impact X series subwoofers set a new standard in high performance, high value bass performance at its price and beyond

The Features:

- 10" / 12" active driver combined with a down firing both sides rounded bass reflex port deliver powerful, musical bass.
- completely new designed 10"/12" extra high excursion driver sets new standards in this price range
- high resolution DSP combined with a highly efficient class D 500W/600W max power amp board for deep, accurate bass performance at low distortion
- remote control for easy use and adjustment from your favorite listening position.

This high output Impact X series combines patented core technologies from the subwoofer experts at Velodyne Acoustics. Complete new designed DSP controlled effective Class D amp board with dual high output 360 W MOSFET power stage. Like all Velodyne Acoustics subwoofers, the Impact X series incorporates anti-clipping and overheat circuitry to limit amplifier clipping distortion.

Premium high-purity copper voice coil winding design minimizes distortion and power compression with maximum heat dissipation, linearity, and tuned magnetics for precise high excursion



Subwoofer Specs:

- Protective non-resonant extra-thick wooden (MDF) frame mesh grille
- Iso-elastomer feet included
- Extra heavy-duty, high current 2m power cord
- Quick Start Guide
- Adjustable (on back panel or remote) 50 to 200 Hz low-pass crossover with a 12 dB/octave slope
- Unbalanced stereo/LFE RCA input
- Unbalanced stereo/LFE RCA output for easy daisy chain
- Speaker Level Stereo Input
- Signal sensing auto turn on/off
- Auto power/on switch
- Subwoofer Volume adjustable on back panel or remote control
- Phase control (0° / 180°) on back panel or remote control
- Blue (power on) / Red (power standby) mode indicator LED
- 4 different DSP presets switchable via remote control
- front display, dimmable via remote control
- Remote control
- RoHS compliant, lead-free construction, world-wide safety certifications
- Green 0.5-watt low standby power consumption
- Dimensions (w/ grille):
 - 10": 36cm H x 32cm W x 40cm D
 - 12": 42cm H x 36cm W x 51cm D
- Shipping Dimensions:
 - 10": 47cm H x 43cm W x 53cm D
 - 12": 53cm H x 47cm W x 64cm D
- Weight (unboxed):
 - 10": 15 kg with Grille
 - 12": 18 kg with Grille
- Shipping Weight:
 - 10": 17kg
 - 12": 20kg



Driver Specs:

- All-new proprietary 10"/12" long-throw driver with high-precision tuned overhung motor configuration
- 25mm/ 28mm Xmax mech precision aligned excursion
- 2" diameter Voice Coil with high current 4-layer high-purity copper wire windings
- Two-piece high grade oversized Ferrite magnet motor
- 6" composite cotton-poly extreme excursion linear spider
- Heavy Duty stamped steel basket, double vented
- Nitrile rubber extreme-excursion surround
- Lightweight reinforced paper Composite cone for enhanced sensitivity and transient response

Amplifier Specs:

- High resolution Analog Devices Audio DSP,
- 250/300W RMS class D power output, 500W/600W max output
- Wide input voltage bandwidth compliant for consumer and pro audio up to 4V line level input.
- High efficiency Switching power supply with 2 x 17A 650V MOSFET, for high efficiency.
- Cool-running Class D amplifier switching topology with four massive 34A 180V MOSFET's
- EQ and DSP limiter settings specifically with EQ listening Presets:
 - Flat/maximum low frequency
 - Movie/ High Output
 - Rock Pop/ for best frequency response
 - night mode/ limited low frequency output
- Input impedance 16 k Ω (unbalance RCA)
- Input impedance 20 k Ω (speaker level)

Remote control:

- IR Remote Control
- sleek, modern design easy to use
- easiest and most convenient way to adjust:
 - polarity
 - internal lowpass crossover frequency
 - Volume up down
 - on/off.
 - Preset: Night Mode / Jazz, Flat / Rock, Pop / Cinema
 - Light / LED brightness adjustment

Accessories:

- Protective non-resonant extra-thick MDF fabric mesh grille
- Iso-elastomer feet included
- Extra heavy-duty, high current 2m power cord
- Quick Start Guide

Tech specs:

	Impact X 10"	Impact X 12"
Driver	10" front firing driver	12" front firing driver
Amplifier Class D	500 watts dynamic 250-watt RMS	600 watts dynamic 300-watt RMS
Frequency Response: Overall Frequency Response: (± 3 dB)	32 – 180 Hz	29Hz – 180 Hz
Frequency Response: Overall Frequency Response: (± 10 dB)	25 – 250 Hz	23Hz – 250 Hz
Low Pass Crossover	50 Hz to 180 Hz (12 dB/Octave)	50 Hz to 180 Hz (12 dB/Octave)
Phase	0 / 180 degrees	0 / 180 degrees
Cabinet Design	20mm MDF	20mm MDF
Magnet Structure	Dual ferrite magnet motor	Dual ferrite magnet motor
Woofer	10" high excursion double vented basket driver with reinforced paper Membrane	12" high excursion double vented basket driver with reinforced paper Membrane
Voice Coil	Four Layer 2" / 52mm voice coil	Four Layer 2" / 52mm voice coil
Input	Gold plated Stereo/LFE RCA, Nickel plated High level in	Gold plated Stereo/LFE RCA, Nickel plated High level in
Output	Gold plated Stereo/ LFE RCA	Gold plated Stereo/ LFE RCA
Power Selector	Off / Auto / On	Off / Auto /On
Finishes	Black / White	Black / White
Dimensions (W/H/D) (includes feet and connectors)	32cm x 36cm x 40 cm	36cm x 42cm x 51 cm
Weight (approx.)	15 kg	18kg
Shipping Weight (approx.)	17 kg	20 kg

